

Model: _____

Item #: _____ Quantity: _____

Project: _____



**Handsink with
Soap & Towel**



Hand/Dump Sink



1800 or 2100 Series Available
(see reverse)

Accessories

- ☐ Stainless steel Splash.
- ☐ Perforated Dump Box.
- ☐ Towel Ring.
- ☐ Faucet Upgrade.
- ☐ Stainless Steel Legs.

- **Soap Dispenser:**
Spout removes from top for easy filing.
Chrome plated spout with plastic soap reservoir below.
- **Towel Dispenser:**
Paper towels easily accessed from below front door. Door swings open for refiling.
- **Sink Bowl:**
20 gauge 304 series stainless steel 10" x 14" x 6" deep. 1 1/2" radius on all vertical and horizontal corners. Furnished with a 1 1/2" stainless steel drain.
- **Front Apron:**
22 gauge 304 series stainless steel.
- **Backsplash:**
22 gauge 304 series stainless steel.
- **Sides:**
20 gauge galvaneal.
- **Back and Bottom:**
20 gauge galvaneal.
- **Legs:**
1 5/8" tubular 16 gauge galvanized steel with grey plastic bullet foot.
- **Water Faucet:**
4" center splash mount faucet on 1800 models.
4" center deck mount faucet on 2100 models.
- **Plumbing:**
1/2" IPS hot and cold water.
1 1/2" IPS drain connection.

Approved By: _____

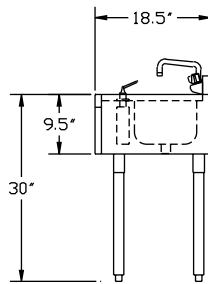
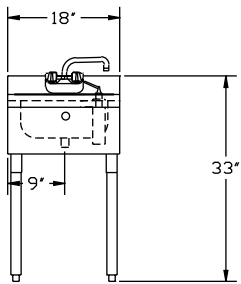
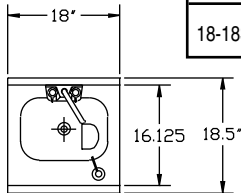
Model: _____ Item #: _____ Quantity: _____ Project: _____



1800 Series

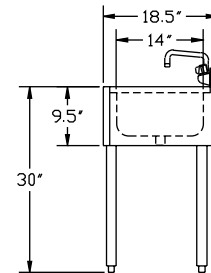
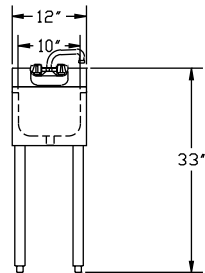
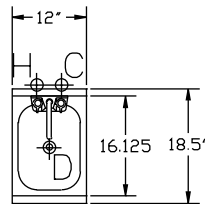
Handsink with Soap & Towel

Model Numbers	Length	Left Side to Drain	Weight lbs
18-18ST	1'-6"	10" x 14" x 6"	37



Hand/Dump Sink

Model Numbers	Length	Left Side to Drain	Weight lbs.
18-1C	1'-0"	6"	25

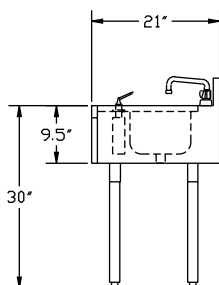
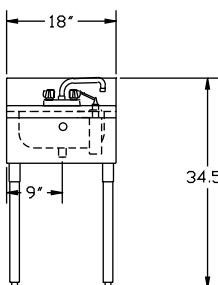
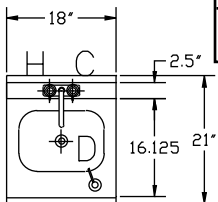


Above unit with four legs.

2100 Series

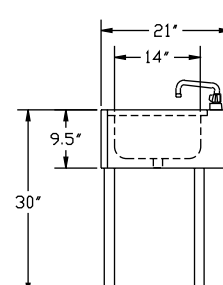
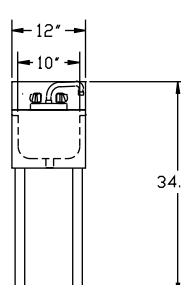
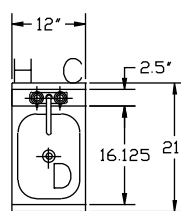
Handsink with Soap & Towel

Model Numbers	Length	Left Side to Drain	Weight lbs
21-18ST	1'-6"	9"	44



Hand/Dump Sink

Model Numbers	Length	Left Side to Drain	Weight lbs.
21-1C	1'-0"	6"	25



Above unit with four legs.

Mechanical Requirements:

1/2" IPS hot and cold water
1 1/2" IPS drain connection

Approved By: _____

Due to our commitment to continued product improvement, specifications are subject to change without notice.