

Continental

Refrigerator

36" SANDWICH UNIT REFRIGERATORS



SW36-10

Models Available

- SW36-8
- SW36-8C
- SW36-12M
- SW36-10
- SW36-10C
- SW36-15M

Utilizing Environmentally Safe, CFC-free R-134a Refrigerant

Standard Features

- Unique Air Flow Distribution Allows Pan Product to Maintain 33°–41°F Being in Compliance with and Certified Under the '98 NSF Standard For Preparation Units.
- Modern, State-of-the-Art Styling
- Performance Rated Refrigeration System Utilizing Environmentally Safe R-134a Refrigerant
- Easily Serviceable Back Mounted Compressor
- 2" Non-CFC Polyurethane Foam Insulation
- Spring Loaded, Self Closing Door
- Magnetic Snap-In Gasket
- 5" Casters, two with brakes/two with out brakes
- Heavy-Duty, Epoxy-Coated Steel Shelves
- Interior Hanging Thermometer
- Full Length Nylon Cutting Board
- Cabinet Construction Consisting of Stainless Steel Front and Top, Aluminum End Panels, Case Back and Interior
- Non-Corrosive, Plasticized Fin Evaporator Coil
- Completely Enclosed, Vented and Removable Case Back
- Automatic, Energy Saving, Non-Electric Condensate Disposal
- 1/6 Size Pans, 4" Deep
- 10 ft Cord and Plug Attached

Optional Features & Accessories

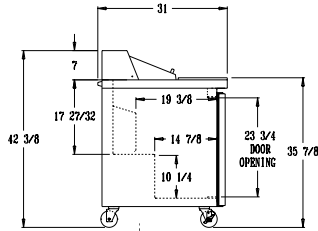
- Legs
- Remote Models R
- Stainless Steel End Panels-SA Models
- Stainless Steel Interior & Exterior-SS Models
- Stainless Steel Finished Back in Lieu of Aluminum
- Electric Condensate
- Pan Opening Sizes
- Stainless Steel Legs
- Additional Shelves
- Door Locks
- Single Overshelf
- Double Overself



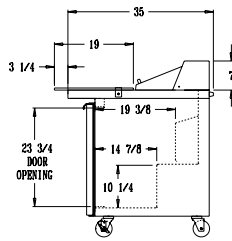
36" SANDWICH UNIT REFRIGERATORS

SPECIFICATIONS DIMENSIONAL DATA

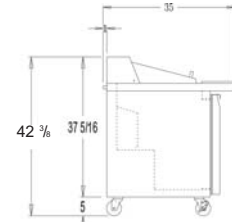
| | SW36-8 | SW36-10 | SW36-8C | SW36-10C | SW36-12M | SW36-15M |
|--|----------|----------|----------|----------|----------|----------|
| Net Capacity (cu. ft.) | 10.3 | 10.3 | 10.3 | 10.3 | 10.3 | 10.3 |
| 1/6 Size Pans | 8 | 10 | 8 | 10 | 12 | 15 |
| Width, Overall (in.) | 36 | 36 | 36 | 36 | 36 | 36 |
| Depth, (incl. Hdls. & Bumpers) (in.) | 31 | 31 | 31 | 31 | 31 | 31 |
| Depth, Body Only (Less Door(s)) (in.) | 27 1/2 | 27 1/2 | 27 1/2 | 27 1/2 | 27 1/2 | 27 1/2 |
| Depth, Cutting Board (Std. Top) | 12 | 12 | 19 | 19 | 10 | 10 |
| Height, Overall (incl. 5" Casters) (in.) | 42 3/8 | 42 3/8 | 42 3/8 | 42 3/8 | 42 3/8 | 42 3/8 |
| Shelf Area (sq. ft.) | 4.6 | 4.6 | 4.6 | 4.6 | 4.6 | 4.6 |
| No. of Shelves | 2 | 2 | 2 | 2 | 2 | 2 |
| No. of Doors | 2 | 2 | 2 | 2 | 2 | 2 |
| Condensing Unit Size (H.P.) | 1/5 | 1/5 | 1/5 | 1/5 | 1/5 | 1/5 |
| Refrigerant | R134a | R134a | R134a | R134a | R134a | R134a |
| Cabinet Electrical | 115/60/1 | 115/60/1 | 115/60/1 | 115/60/1 | 115/60/1 | 115/60/1 |
| Amps | 6.3 | 6.3 | 6.3 | 6.3 | 6.3 | 6.3 |
| Fans | 2 | 2 | 2 | 2 | 2 | 2 |
| Interior Depth (in.) | 20 | 20 | 20 | 20 | 20 | 20 |
| Interior Height (in.) | 26 1/4 | 26 1/4 | 26 1/4 | 26 1/4 | 26 1/4 | 26 1/4 |
| Interior Width (in.) | 32 | 32 | 32 | 32 | 32 | 32 |
| Shipping Weight (lbs.) | 240 | 240 | 240 | 240 | 250 | 250 |
| Shipping Height (in.) | 43 1/4 | 43 1/4 | 43 1/4 | 43 1/4 | 43 1/4 | 43 1/4 |
| Shipping Length (in.) | 43 | 43 | 43 | 43 | 43 | 43 |
| Shipping Depth (in.) | 46 | 46 | 46 | 46 | 46 | 46 |



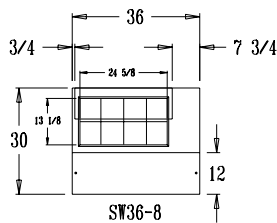
Standard Top Side View



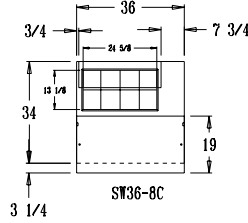
C-Top Side View



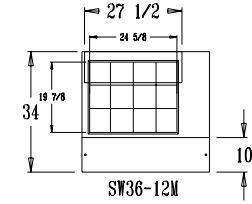
M-Top Side View



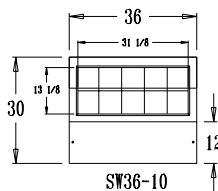
SW36-8



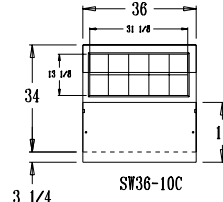
SW36-8C



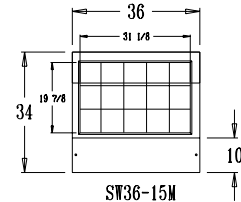
SW36-12M



SW36-10



SW36-10C



SW36-15M

Continental
Refrigerator

A Division of National Refrigeration & A/C Products, Inc.
539 Dunksferry Road Bensalem, PA 19020
(800) 523-7138 Fax: (215) 244-9579
www.continentalrefrigerator.com